



RELIABLE ULTRASONIC MEASUREMENT



# CYGNUS MINI ROV MOUNTABLE ULTRASONIC THICKNESS GAUGE



The Cygnus Mini ROV Mountable thickness gauge has been specially designed to be mounted onto small observation ROVs with or without a manipulator facility. Built in conjunction with VideoRay, this subsea thickness gauge will allow the operator to carry out an ultrasonic thickness measurement in areas that have previously been unfeasible using larger ROVs or divers. And no need to remove coatings!



HULL UTM  
INSPECTION



CIVIL  
ENGINEERING



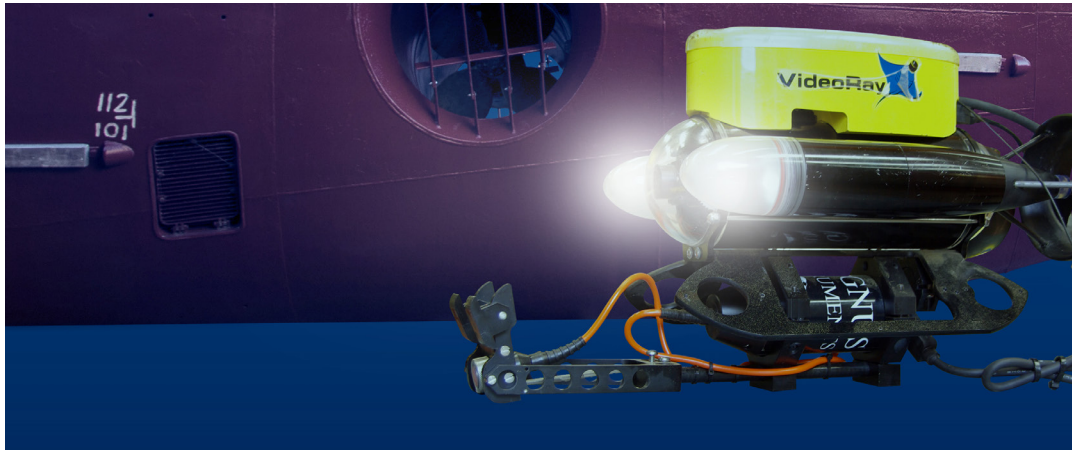
MARINE  
STRUCTURES



OFFSHORE  
PLATFORMS

IDEAL FOR  
USE IN

...UWILD or IWS class surveys, subsea inspection, repair and maintenance (IRM) of infrastructure, underwater equipment



## CYGNUS MINI ROV MOUNTABLE KEY FEATURES



GO TO  
PRODUCT  
PAGE

- **Multiple-Echo mode for accurate, through-coat measurements as specified by Classification Societies**
- Supplied with CygLink software to display and process measurements on a computer at the surface
- Easy calibration at the surface via CygLink software or Topside Repeater (TSR) unit
- Optional Topside Repeater (TSR) unit allowing readings to be displayed remotely and superimposed onto ROV's camera screen
- Optional purpose-built ROV probe handlers for optimal alignment



**DEPTH  
RATED  
TO 500M /  
1,640 FT**



**CYGLINK  
SOFTWARE**

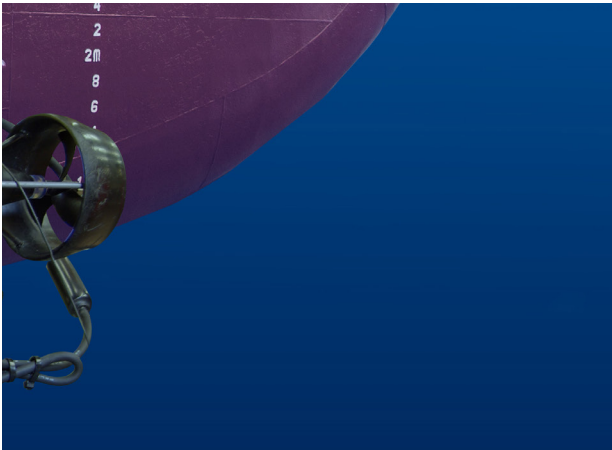


**TOPSIDE  
REPEATER  
OPTION**



**PURPOSE-  
BUILT PROBE  
HANDLERS  
OPTION**

Visit [www.cygnus-instruments.com](http://www.cygnus-instruments.com) to explore our full product range



## OPTIONS AND ACCESSORIES

### Engineered Probe Handling Solutions

Complementing the Cygnus Mini ROV Mountable thickness gauge, the Cygnus G1 is designed for use on observation, inspection and light workclass ROVs whilst the S1 probe handler is developed for use on ROVs performing UTM surveys on ship hulls.

### Topside Repeater Remote Display Unit

The Cygnus Topside Repeater is a remote display unit connected to the gauge with an umbilical cable. It displays the thickness measurements at the surface in real-time during the survey.

### Topside Repeater with Video Overlay

The Topside Repeater can also overlay the real-time thickness measurements on to a composite video signal, displaying it on the survey monitor screen. It will also then be recorded (if there is a video of the survey), showing exact locations and the thickness measurement for future reference.

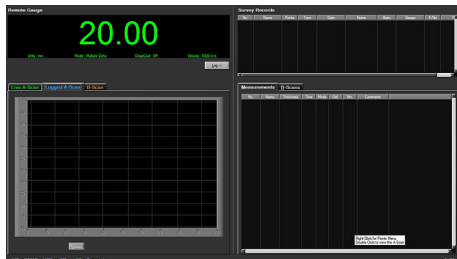


Cygnus G1

Cygnus S1

### Cymlink Computer Software

Cymlink is a Windows® application that allows remote viewing, control and data logging of the Mini ROV gauge. The software can generate survey reports in PDF or export to a CSV file. Designed for Windows® 7 and above.



Call our team today on +44 (0) 1305 265 533 for expert product advice

## CYGNUS MINI ROV MOUNTABLE SPECIFICATION

Feature	Description
<b>Materials</b>	Velocities between 1000 m/s and 9995 m/s (0.0400 and 0.3998 in/microsec)
<b>Measurement Range in Steel</b>	1mm - 250mm (0.040" - 10.000") depending on selected probe and configuration, material and temperature
<b>Accuracy</b>	±0.1mm (±0.004") or 0.1% of thickness measurement, whichever is greatest, when calibrated in accordance with Cygnus Instruments calibration procedure
<b>Resolution</b>	0.1 mm or 0.05 mm (selectable) (0.005" or 0.002")
<b>Probe Options</b>	Single crystal probes
<b>Power</b>	7.5 - 30 V DC @ 150 mA (max)
<b>Display</b>	PC or laptop with VGA (not included)
<b>Size</b>	160mm x 62mm (6.3 x 2.4 in.)
<b>Weight in Air</b>	550g (19.4 oz)
<b>Operating Temp.</b>	-10°C to +50°C (14°F to 122°F)
<b>Approvals</b>	RINA Type approved
<b>Testing</b>	Tested to 500m (1,640ft) depth
<b>Communication</b>	RS-422, Simplex Single Pair or 2400 Baud (RS-232 9600 Baud output available as special order)
<b>Standards</b>	Designed for EN 15317
<b>Compliance</b>	CE, UKCA, RoHS
<b>Warranty</b>	3 years on gauge and 6 months on probe



Cygnus Instruments Ltd.  
 Cygnus House  
 30 Prince of Wales Road  
 Dorchester  
 Dorset DT1 1PW  
 United Kingdom



ISS6 03/21

*All information provided is subject to change without prior notice.*

### Cygnus Headquarters

**Call** +44 (0) 1305 265 533  
**Email** [sales@cygnus-instruments.com](mailto:sales@cygnus-instruments.com)  
**Visit** [cygnus-instruments.com](http://cygnus-instruments.com)

### Cygnus UAE

**Call** +971 50 3459305  
**Email** [ribu@cygnus-instruments.com](mailto:ribu@cygnus-instruments.com)  
**Visit** [cygnus-instruments.com](http://cygnus-instruments.com)

### Cygnus USA

**Call** +1 346 223 0415  
**Email** [sales@cygnus-instruments.com](mailto:sales@cygnus-instruments.com)  
**Visit** [us.cygnus-instruments.com](http://us.cygnus-instruments.com)

### Cygnus Singapore

**Call** +65 6252 5909  
**Email** [sales@cygnus-instruments.sg](mailto:sales@cygnus-instruments.sg)  
**Visit** [sg.cygnus-instruments.com](http://sg.cygnus-instruments.com)